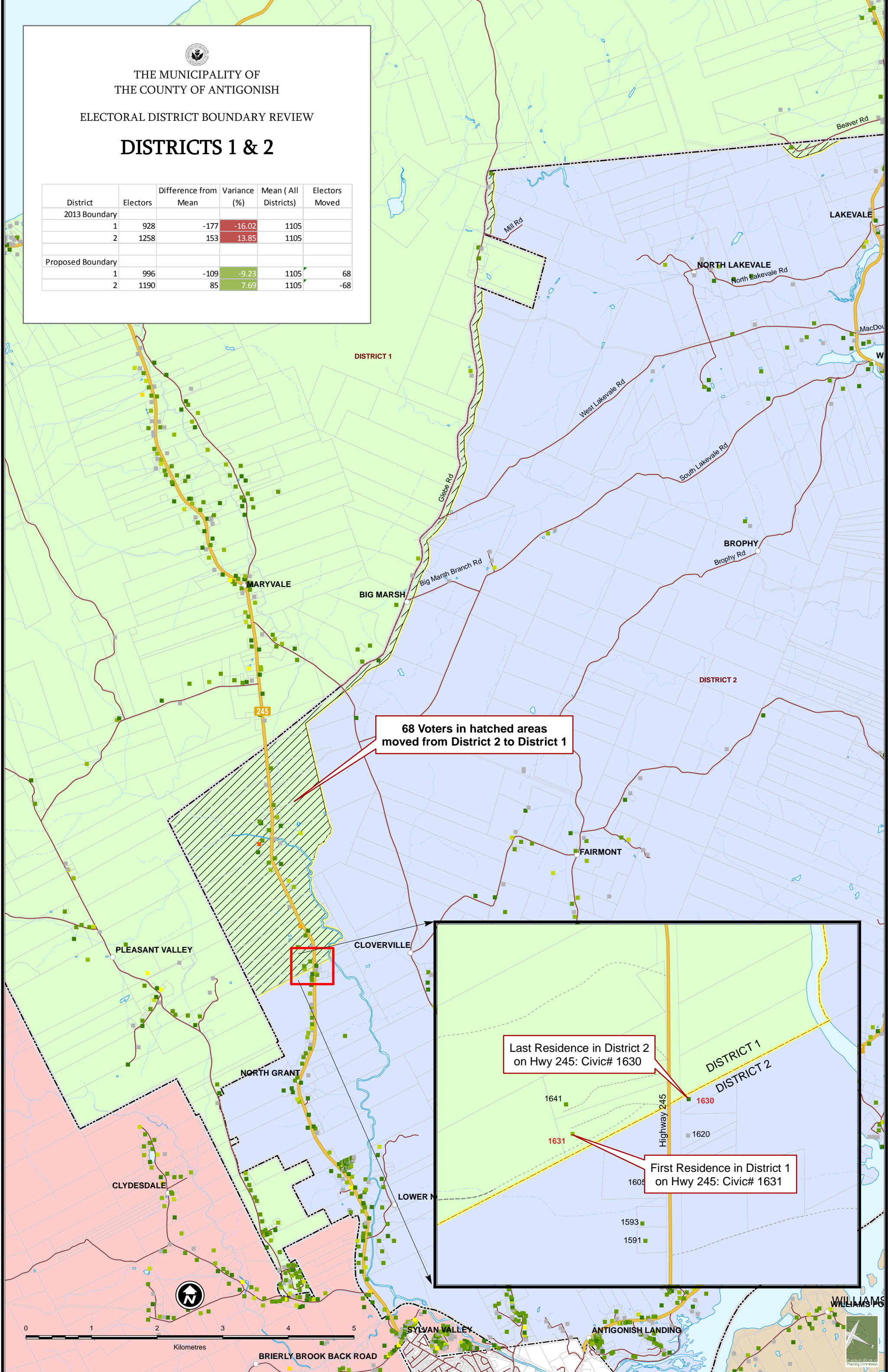


THE MUNICIPALITY OF
THE COUNTY OF ANTIGONISH

ELECTORAL DISTRICT BOUNDARY REVIEW

DISTRICTS 1 & 2

| District | Electors | Difference from Mean | Variance (%) | Mean (All Districts) | Electors Moved |
|--------------------------|----------|----------------------|--------------|----------------------|----------------|
| 2013 Boundary | | | | | |
| 1 | 928 | -177 | -16.02 | 1105 | |
| 2 | 1258 | 153 | 13.85 | 1105 | |
| Proposed Boundary | | | | | |
| 1 | 996 | -109 | -9.23 | 1105 | 68 |
| 2 | 1190 | 85 | 7.69 | 1105 | -68 |



68 Voters in hatched areas moved from District 2 to District 1

Last Residence in District 2 on Hwy 245: Civic# 1630

First Residence in District 1 on Hwy 245: Civic# 1631

